

## Playing it Safe with KVM -- Key Safety Systems Unlocks the Key to Centralized Server Management with ATEN Products

### Customer:

Key Safety Systems Inc.



### Industry:

Automotive Supplier

### IT environment:

- 25 servers
- 300 workstations
- Multiplatform environment
- Gigabit Ethernet network, 100-megabit network

### Challenge:

For its growing server environment, Key Safety Systems decided to implement a modern Matrix KVM switch that allows decentralized server management with multi-user and crossplatform capacity while offering a high degree of reliability, flexibility and scalability.

### Project requirements:

Decentralized server management, scalability, multi-user and crossplatform capacity

### ATEN solution

**ALTUSCN™ KM0432**  
4-console, 32-port Matrix KVM Switch

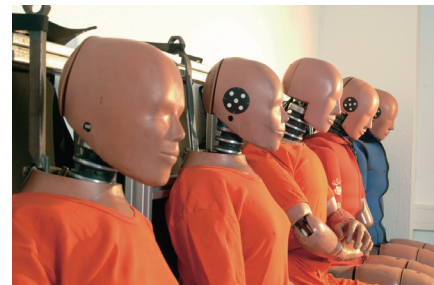


Key Safety Systems is an automotive industry leader in the design and production of airbags, seatbelts, steering wheels and fully integrated safety systems. Its products are used in more than 300 vehicle models across 60 vehicle makes throughout North America, Europe and Asia. Key Safety Systems' customers include DaimlerChrysler, Fiat, Ford, General Motors, Hyundai, PSA, Volkswagen and many others. Key Safety Systems' global presence consists of 36 manufacturing, technical and sales facilities located in 12 countries.



### The Challenge

The European central office of Key Safety Systems is located in Raunheim, Germany. This office serves as the facility for development, testing and release for serial production of airbags and safety components for the European market. To address the various requirements of its automobile manufacturer customers, Key Safety Systems realized the need to develop a very specific IT environment using servers, services and an array of applications. The range of its IT requirements also involves a large variety of platforms, such as Unix, Linux, Novell, Windows and several clustering systems.



*Key Safety Systems has applications specifically for PC-controlled test methods and crash simulations to ensure the quality of its products.*

With steady corporate growth, Key Safety Systems was using an outdated server management product, which prompted a need for a more contemporary solution for its data center in this region. The growth spurt increased the number of servers and computers and placed stress on its existing KVM switch that could not shoulder the expanded server load. Key Safety Systems quickly realized the need for a Matrix KVM switch that would allow several administrators synchronous access to the servers, while offering a high degree of scalability for the growing server environment.

### The Solution and Results

Working with Perot Systems, the company's IT service provider, and Bell Equip, a provider of high-availability data communication systems, Key Safety Systems conducted an extensive market survey.

After an eight-week evaluation process, Bell Safety Systems selected ATEN's KM0432 4-console, 32-port Matrix KVM switch, from the ALTUSEN™ enterprise KVM line that offered the optimal solution for the required application range. "For this range of application, we have definitely found the best price/performance ratio in ATEN's products. The KM0432 offers sound technology, transmits good video quality and all this at an unequalled price," said Thomas Mussnig, Managing Director of Bellequip.

The KM0432 was put through extensive testing that went smoothly without complications and demonstrated the product's ability to quickly assimilate into the company's network. "Implementation on the 25 servers did not pose a problem, as the KM0432 offered us exactly what we expected: an extremely user-friendly, out-of-the-box solution that functions smoothly," said Nikos Haberlah, Project Manager of Perot Systems.

### Flexibility and Scalability

The ATEN solution offered scalability to accommodate the increased server load as well as more flexibility than the previous switch by allowing those servers located in the various departments to be easily integrated for more efficient central monitoring of all systems. By selecting the KM0432, Key Safety Systems deployed a flexible and scalable server management solution that allowed direct connection of four operating consoles and 32 servers via Cat 5 cabling. "We were looking for a modern KVM switch that makes it possible for the administrators to access the servers inside and outside the computer center, both by the server room and by a remote operator console. The ATEN solution means that server management no longer has to take place in the rather unreal, uncomfortable world of the server room - 60° Fahrenheit, air-conditioned, drafty and very noisy," explained Nikos Haberlah.

Since the KM0432 is a very flexible Matrix KVM switch with multiplatform support for PS/2, USB, Sun and Serial operator consoles, it can be used in very heterogeneous systems. The CPU modules required for integration can be adapted to the individual requirements. The three administrators can have synchronous access of up to 32 directly connected servers from the four physical operator consoles by using various server and console platforms.



*The console module allows users to control a local computer and easily access servers on the Matrix KVM Switch directly from their desks.*

In addition, the ATEN product is "future-ready" to accommodate more than the current number of 25 servers and 300 computers by extending the network through cascading (i.e. connecting) more KVM switches in series. The Matrix KVM switch has downward compatibility so it can be connected to up to seven other KM0432 switches in the form of a "daisy chain." The unit can optionally connect up to 32 16-port KVM switches without performance loss and offer the capability to control up to 4,096 computers in real time.

### Security Guaranteed

With the need for quick and reliable diagnostic options, the IT team can leverage the high performance, user-friendliness and reliable security features of this ATEN product. Unlike software solutions, which can only be used when the operating system is fully functional, the hardware-based server management with the KM0432 allows users to access the BIOS levels of the connected servers – this gives the system access to a computer even if it can no longer be booted up. "I prefer to work directly on the KVM switch, which is closer to the hardware than software tools are. The device guarantees secure, reliable access to the system, can handle cross-platforms, offers matrix access to several administrators, can be extended and reduces cabling," added Nikos Haberlah.



**ATEN International Co., Ltd.**

3F, No.125, Sec. 2, Datung Rd. Sijhih City, Taipei 221, Taiwan  
Phone: +886-2-8692-6789 Fax: +886-2-8692-6767  
Email: marketing@aten.com